



new components for CMM and vision fixturing

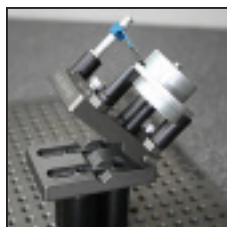


The R&R Solution. **Everything to Hold Anything.™**
YOUR SINGLE SOURCE FOR CMM & VISION FIXTURING

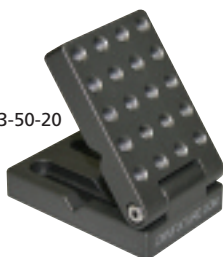
Component drawings, dimensions, and fixturing examples can be found at www.cmmfixture.com

adjustable angle plate

Ideal for holding components on any angle. The angle plate is adjustable to 180 degrees and can be set into fixed positions vertically or horizontally.



PCA-5023-50-20



PART#	THREAD	HT	PRICE
PCA-5023-50-20	1/4-20	2.0"	\$154.00
PCA-135075-10-4	M4	50mm	\$175.00

adjustable slide

To place components in between holes on a CMM or vision plate.



ASA-40-8



ASA-45-4



PART#	THREAD	HT	PRICE
ASA-2-20 (acrylic)	1/4-20	.25"	\$33.50
AS-40-8	M8	10mm	\$30.00
ASA-45-4 (acrylic)	M4	5mm	\$30.00

adjustable steel jack stand

To allow variable heights of up to 22mm and then lock into position for large or heavy parts.



AJS-35-8

PART#	THREAD	DIA	HT	PRICE
AJS-35-8	M8	35mm	65mm	\$85.00

micro adjustable v

For cylindrical parts smaller than 6.5mm dia., you can hold them within the V, varying the adjustment length of the part. Parts can be held down with optional clamp, if needed.



AVM-4

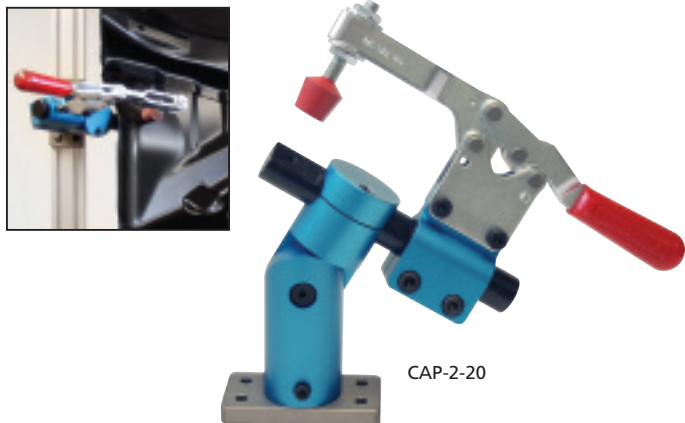


PART#	THREAD	HT	PRICE
AVM-4	M4	12mm	\$130.00

Component drawings, dimensions, and fixturing examples can be found at www.cmmfixture.com

large adjustable pivot clamp

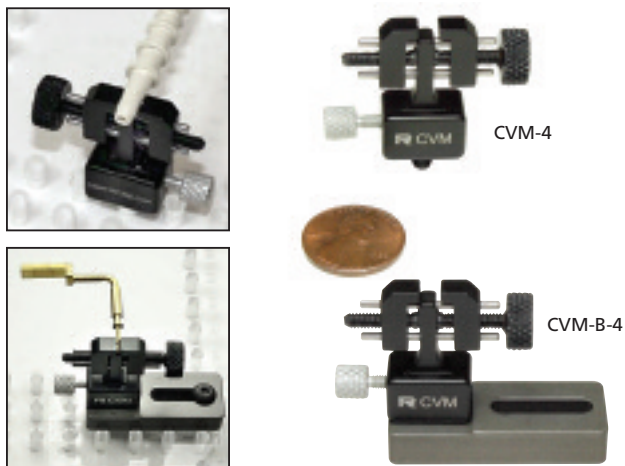
Used to hold parts vertically or horizontally with 4-axis rotation. Especially good for clamping sheet metal and plastic parts up.



PART#	THREAD	HT	PRICE
CAP-2-20	1/4-20	10"	\$350.00
CAP-50-8	M8	250mm	\$350.00

micro vise clamp

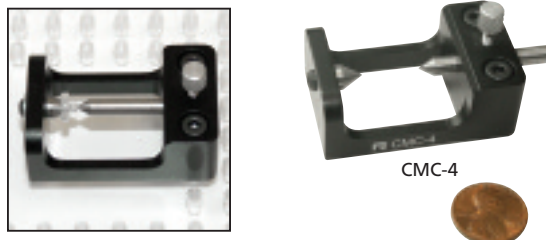
Ideal for holding parts horizontally or vertically with minimum contact on the part made with a V notch in both directions for holding cylindrical and tubular parts as well. Micro vise clamp sold with or without base.



PART#	THREAD	HT	PRICE
CVM-20	1/4-20	1.01"	\$115.00
CVM-B-20 (with base)	1/4-20	1.37"	\$145.00
CVM-4	M4	28mm	\$115.00
CVM-B-4 (with base)	M4	35mm	\$145.00

micro center

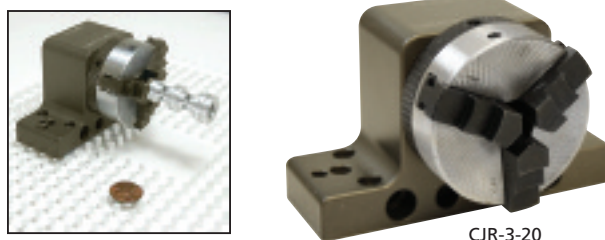
Has adjustability to hold cylindrical parts up to 26mm in length and 25mm dia. (or smaller) using a female or male tapered pin. You can gain access around the part for touch probing with your CMM or viewing with your vision system.



PART#	THREAD	HT	PRICE
CMC-4	M4	30mm	\$145.00

rotating 3-jaw clamp

For clamping parts on ID and OD, the rotating 3-jaw clamp can be locked into position on the part then rotated to a marked increment to help locate the rotation of the part for measurement. The rotating 3-jaw clamp can accommodate 7/8" dia. up to 3-1/8" dia. Can be used with 1/4-20 or M4 threads.



PART#	THREAD	HT	PRICE
CJR-3-20	1/4-20	2.5"	\$285.00
CJR-3-4	M4	60mm	\$285.00

spring pusher standoff clamp

Designed for fixturing small parts in tight or compact space. Ideal for positioning parts and for profile clamping with maintaining constant pressure on part, minimizing fixturing space.



PART#	THREAD	DIA	HT	PRICE
CSPS-751-20	1/4-20	.75"	1.0"	\$50.00
CSPS-1210-4	M4	12mm	10mm	\$45.00

Component drawings, dimensions, and fixturing examples can be found at www.cmmfixture.com

1/4-20 and M8 component tray

To hold and organize (28) 1.5" / 38mm dia. components.



PART#	THREAD	HT	DIMENSIONS	PRICE
TC-128-15038	1/4-20, M8	1.0"	12" x 7.5"	\$150.00

delrin resting pins

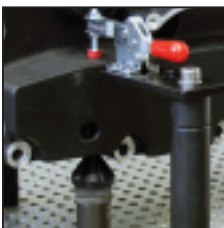
To rest a part on a non-marring point.



PART#	THREAD	DIA	HT	PRICE
RPD-20	1/4-20	.375"	.375"	\$15.00
RPD-4	M4	6mm	5mm	\$16.00

steel cone

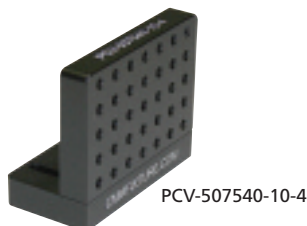
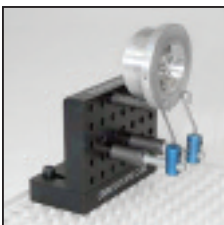
To rest a part on a rounded point.



PART#	THREAD	DIA	HT	PRICE
RCS-25-8	M8	25mm	19mm	\$28.50

vertical base plate

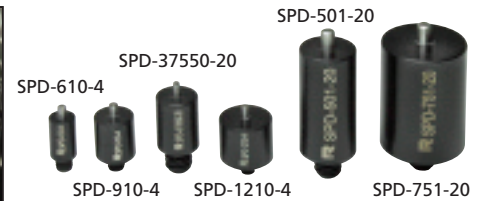
For holding components vertically. Great for use with vision systems.



PART#	THREAD	PRICE
PCV-507540-10-4	M4	\$135.00

delrin pin standoffs

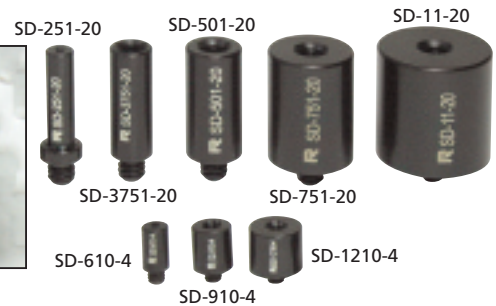
To elevate and locate a part against a pin using a non-marring material.



PART#	THREAD	DIA	HT	PRICE
SPD-37550-20	1/4-20	.375"	.50"	\$15.75
SPD-501-20	1/4-20	.50"	1.0"	\$15.50
SPD-751-20	1/4-20	.75"	1.0"	\$16.80
SPD-610-4	M4	6mm	10mm	\$14.00
SPD-910-4	M4	9mm	10mm	\$15.50
SPD-1210-4	M4	12mm	10mm	\$17.25

delrin standoffs

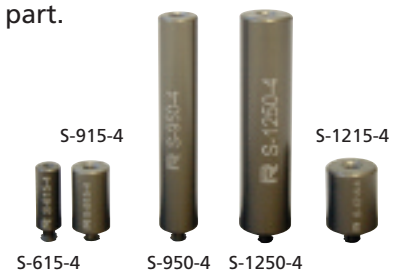
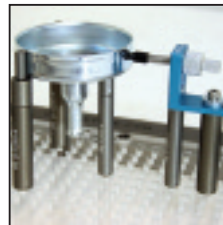
To elevate and locate a part using a non-marring material.



PART#	THREAD	DIA	HT	PRICE
SD-251-20	1/4-20	.25"	1.0"	\$15.25
SD-3751-20	1/4-20	.375"	1.0"	\$15.00
SD-501-20	1/4-20	.50"	1.0"	\$14.00
SD-751-20	1/4-20	.75"	1.0"	\$15.25
SD-11-20	1/4-20	1.0"	1.0"	\$17.25
SD-610-4	M4	6mm	10mm	\$13.50
SD-910-4	M4	9mm	10mm	\$15.00
SD-1210-4	M4	12mm	10mm	\$16.50

M4 standoffs

To elevate and locate a part.



PART#	THREAD	DIA	HT	PRICE
S-615-4	M4	6mm	15mm	\$14.00
S-915-4	M4	9mm	15mm	\$14.25
S-950-4	M4	9mm	50mm	\$16.25
S-1215-4	M4	12mm	15mm	\$15.00
S-1250-4	M4	12mm	50mm	\$17.00

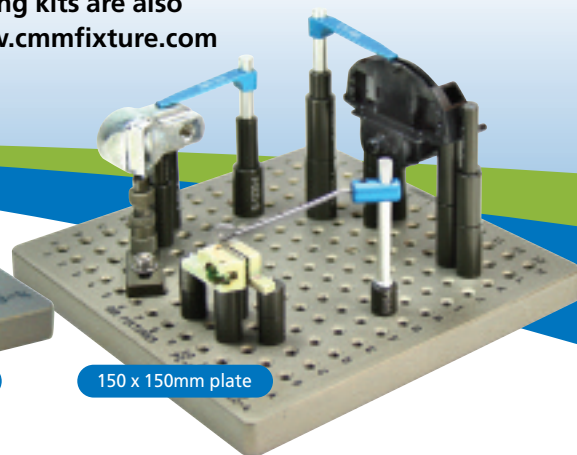
Do you check small parts?

Use the R&R Fixture M4 CMM clamping kit for holding even the smallest of your parts.

M4 vision clamping kits are also available at www.cmmfixture.com



300 x 300mm plate



150 x 150mm plate

making your part setups accessible, repeatable & flexible

M4 CMM clamping kit with component set A

R&R Fixture kits include a fixture base plate and set of components

Plate choices:

BASE PLATE SIZE	SET	PART #	PRICE
13mm x 150mm x 150mm	A	KC-C1A-4	\$980
13mm x 300mm x 300mm	A	KC-C2A-4	\$1,383



Set A: (43) M4 components

QTY	PART #	DESCRIPTION
3	S-610-4	6mm dia. x 10mm standoff
3	S-625-4	6mm dia. x 25mm standoff
3	S-95-4	9mm dia. x 5mm standoff
3	S-910-4	9mm dia. x 10mm standoff
3	S-925-4	9mm dia. x 25mm standoff
2	S-950-4	9mm dia. x 50mm standoff
3	S-1210-4	12mm dia. x 10mm standoff
3	S-1225-4	12mm dia. x 25mm standoff
2	S-1250-4	12mm dia. x 50mm standoff
2	SP-610-4	6mm dia. x 10mm pin standoff
2	SP-910-4	9mm dia. x 10mm pin standoff
2	CT-40-25-4	40mm tension clamp with 25mm post w/ M4 thread
3	CW-25-25-4	25mm wire clamp with 25mm post
2	CW-50-50-4	50mm wire clamp with 50mm post
4	RPA-4	aluminum resting pin
1	AJ-9-4	9mm dia. adjustable jack stand
1	AS-30-4	30mm long adjustable slide
1	XT-Box	organizer box

the right components + the right price = the right fixture™